

## Planning & design of the runway resurfacing work

Pankaj Dahiya

Master of Technology (Civil Engineering), CBS Group of Institutions, Jhajjar, Haryana, India

### Abstract

The growth of air transportation is one of the most remarkable technological developments of last century. The wonderful increment in air-travel, has made serious blockage at the airplane terminals in the huge urban areas, requiring extra offices for quickly developing short-pull residential markets. The examinations demonstrate that the current terminals and runways would be deficient to deal with air activity. "Runway outline and the Structural plan of Airfield asphalt" is a district particular task work that expects to geometrically plan the runway and situate it considering every one of the components that influence it including the ecological standards and controls. Meteorological overview, Geological review, Topographic study, Drainage study and Reconnaissance studies are done in and around the proposed air terminal site. Every one of the variables influencing site choice are viewed as and cross checked with the proposed site conditions and area.

**Keywords:** airfield pavement, airport, design, FAA, ICAO, orientation, runway

### Introduction

The growth of economy of any country depends upon the development of transportation. In nation like India, having second biggest arrangement of railroads on the planet and completely created roadway transportation, there is developing interest for air transportation. Requests for bigger limit and more offices at the air terminals are expanding at a quicker rate. The expanded number of aircrafts and their expanding armada size and flight frequencies has made focused residential administrations with passage diminishments, notwithstanding zooming oil costs. Indian air terminal other than runway limits are likewise missing especially in obliging new carrier workplaces and their requests for taking care of travelers. Show development rate places Indian airplane terminals among the quickest developing on the planet, beside China. The parallel runway was proposed in 2006 after examinations demonstrated that the current terminals and runways would be insufficient to deal with air activity and the current Chennai air terminal was immersed in 2015. The Rs.2000-crore extension venture, considered imperative for the Tamil Nadu State's framework advancement, got postponed attributable to different reasons. The ICAO ponder, distributed in 2010, prescribed that a parallel runway require not be developed if another airplane terminal would have been worked at Sriperumbudur<sup>[1]</sup>.

A Greenfield airplane terminal is a need for Chennai as there is intense clog and as an elective arrangement. The AAI considered the proposed second airplane terminal at Sriperumbudur, for which the International Civil Aviation Organization has finished an attainability contemplate and presented a report. Aside from these issues, the advancement of airplane terminals in Coimbatore and Madurai and agreeing global status for the Coimbatore air terminal were likewise under thought. A plan paper like this on Airport Engineering is fundamental in achieving the specialized assets required for interest in aviation routes, airplane terminal upgrades and advancement of new air terminals. The vehicle modes like roadway, conduit and aviation route have been utilized by the humankind utilizing area, water and air. In the past railroads were doled out need of advancements, since it was one method of transport, which helped mass transportation of merchandise

and travelers. Railroads and roadways in India and abroad are in rivalry today to provide better transportation offices. Air transportation is the most appropriate transportation strategy for long separation ventures. So runway has extremely significance<sup>[2]</sup>. Runway is a long and relatively limited strip, which is cleared for little aerodromes. Repair and reemerging of runway is a perplexing movement, which requires far reaching building assessment, choice of reasonable materials comparable to issues and appropriate co-appointment of development technique and exercises. It additionally requests setting up satisfactory quality planes and quality confirmation strategies. For runway reemerging it is required to decide the nature and reach out of weakening and furthermore the reasons for disintegration. For this it is basic to do nitty gritty investigation including general projection assessment in order to develop appropriate repair options<sup>[3]</sup>.

Air terminals the same number of different associations need to give support to the offices and resources for guarantee serviceability and operational wellbeing for the progression of the business and administrations. Regardless of the measure of the airplane terminal or aerodrome, runways are key frameworks requiring their surfaces to be kept in ideal conditions keeping in mind the end goal to keep up nonstop and safe air ship tasks amid landing and withdrawing. Air terminals may set up substantial or little upkeep associations to adapt to this operational duty. Contingent upon the air terminal's size and needs (after a total evaluation of all air terminal foundations and offices), a wide range of sorts of support associations might be built up. A few air terminals dole out the upkeep duty under the Operations region, different air terminals build up a Maintenance operational zone, and others oversee Maintenance as outsourcing administration, and so forth<sup>[4]</sup>. All things considered, a best practice is that asphalt support and visual guides upkeep be utilitarian autonomous in the hierarchical outline with their own work force assets. Asphalt support duties ought to be overseen by a structural architect, asphalt master and aerodrome build or comparative, with wide information and experience on systems and methodology to avoid and repair asphalt surface. This position may likewise be in control or ready to answer to the dependable of the upkeep of the runway's

markings, non-cleared regions and wastes, that influences asphalt execution. For visual guides upkeep it is suggested that an electrical, electronic or comparable architect be in charge of these exercises. As air terminals are substances that speak to originals of tertiary associations, the upkeep action is principal for administrations offered to their clients. In this manner, it is required that those "administrations for the client" consider the accompanying angles: time, association, usage, cost and specialized learning. The administration of these perspectives, and also that relating to whatever remains of the air terminal association, ought to be guided to plan, program and counteract, for which the officer in control has an assortment of assets integrated [5].



**Fig 1:** Runway clearing by employees

Most runway resurfacing is carried out at night, with contractors given access for just a few hours. They make the fundamental strides in short impacts, completing a region consistently and resuscitating it the next day. It isn't stunning, given these constraints, that originators and brief specialists tend to remain with endeavored and attempted mixes for the new runway surface as a rule Marshall Asphalt, a perpetual checked on add up to mix that gives a harder surface than standard hot moved mixes. Nynas has, consistently, developed different things that can be used as a piece of runway surfacing and other seriously trafficked zones inside plane terminals. These consolidate folios with high insurance from hurt by fuel oils and de-icing fluids an imperative issue for plane terminal chiefs – and moreover cover for thin surfacing and foam mixes [6]. One fuel hurt contradicting thing Nyguard, was used at Bristol Airport to bring two tedious runways over into use as runways and for aircraft refueling and ceasing. These subordinate zones are seen as lower possibility. Having developed another air terminal, the essential presumed that goes to the blueprint configuration is with respect to the assurance of a fitting site. Before this is done, the going with information concerning the future plane terminal are gathered [7]:

- a. Peak hourly volume of air activity to be taken care of;
- b. The present and future sorts of flying machines which may utilize the air terminal.
- c. Besides this their qualities like the size, turning span, encompassing range, weight and wheel arrangement and so on ought to likewise be contemplated.
- d. Facilities to be accommodated the travelers, stuff and payload, for landing and take-off and overhauling of air ships ought to be considered.

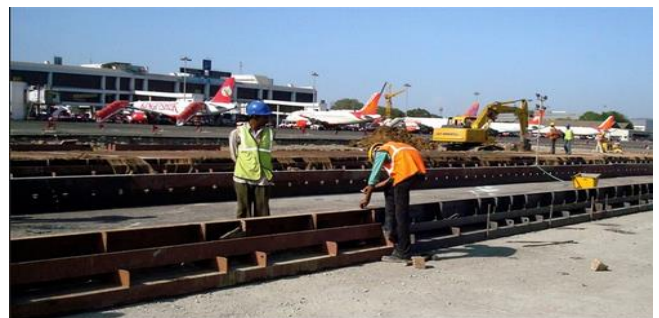
This chooses the sort of airplane terminal to be created. In view of the order of air terminal, the geometric principles of methodologies, runways and runways are resolved. In this way the organizer gets a thought of the rough land estimate required for building up another air terminal. The breaking points of the greatest elevations of the land and man-made

highlights in the approach zones and turning zones can likewise be chosen [8].

### Runway Design

The runway is a major element of the airport. It is unmistakably characterized zone of an air terminal arranged for landing as well as take off of air ship. Runways and runways ought to be so arranged in relations to other major working components, for example, terminal building, load regions, overskirts air activity administrations and stopping and so forth to give an air terminal design offering the most extreme general proficiency. Runways are ordinarily distinguished by the essential components. Runway area and introduction are absolutely critical to flying security, solace and comfort of task, condition impacts, and the general proficiency and financial aspects of the air terminal [9]. In building up another runway format as well as assessing existing designs for enhancements where runways are included and additionally existing runways are broadened, the factor affecting runway area and introduction ought to be considered. The weight and level of worry to be given to each factor are to a limited extent reliant on the plane kinds anticipated that would use every runway, the meteorological conditions to be obliged, the encompassing condition and the volume of air movement anticipated that would be created on every runway. Following elements ought to be considered in area and arranging new runways as well as setting up which end of existing runways ought to be broadened [10].

- a. Location of neighboring airports.
- b. Obstruction and topography.
- c. Built up areas and noise.
- d. Air traffic control technique.
- e. Wind direction and visibility condition.
- f. Capacity (type and amount of traffic).



**Fig 2:** Runway resurfacing work

### Planning & design of the runway resurfacing work

Monitoring the Pavement Performance Since the opening of the airport in 1998, a pavement management system using Mico-Paver has been established. Ground settlement of the runways and taxiways has been closely monitored and profilometry survey by the Auto Rod equipment has been carried out every year to evaluate the runway profile against the ICAO recommendation and also to determine the roughness index of the runways. Ground penetrating radar3) has been used to evaluate the bond condition between asphalt layers. A database has been also established to record all pavement distress identified during the regular inspection and subsequent repair method. Skid resistance of the pavement surface is monitored by the Grip tester machine [11]. During the initial operation of the North Runway in August 1999, groove fretting and closure were observed in the braking zone of the runway. An investigation revealed that although the 60/80pen binder

used of the asphalt mixture complied with the specification requirement, its stiffness at 60 degree C was relatively low. During its early service life, the bitumen was relatively soft at high ambient temperature; this had resulted in the groove closure and fretting. The pavement heaving problem) in North Runway, found during 2000-2003, had created a number of pavement distress, including debonding and slippage cracks, and resulted with extensive patch repairs on the runway pavement. Changes in the quality of pavement surfacing materials during their service life (i.e. age-hardening characteristics) have also been monitored <sup>[12]</sup>.

### Flexible airfield pavement

Flexible pavements are so named because the total pavement structure deflects, or flexes, under loading. An adaptable asphalt structure is ordinarily made out of a few layers of materials. Each layer gets loads from the above layer, spreads them out, and passes on these loads to the following layer underneath. In this way the stresses will be diminished, which are most extreme at the base layer and least on the highest point of subgrade. Keeping in mind the end goal to take greatest favorable position of this property, layers are typically orchestrated in the request of sliding burden bearing limit with the most astounding burden bearing limit material (and most costly) on the top and the most reduced load bearing limit material (and slightest costly) on the base. For adaptable asphalts, auxiliary outline is chiefly worried about deciding proper layer thickness and structure <sup>[13]</sup>. The fundamental outline factors are worries because of movement load and temperature varieties. It is notable that the present asphalt plan systems don't precisely anticipate the load association of firmly separated landing gears on these new-age flying machine. This vulnerability is bolstered by the way that thickness-outline bends have not yet been incorporated into the preparatory specialized distribution for the Airbus A380 <sup>[14]</sup>.

### Quality assurance system and production control

The Airport Authority expected temporary workers to work a quality administration framework in view of ISO 9000, setting the duty of value control and confirmation on the Contractor. PASJV actualized its own particular quality systems and plans to deal with the reemerging work. Nitty gritty record of the different exercises was kept up and accessible for review whenever. All testing are completed by an affirmed free research facility utilized by the Contractor. Outlines of test outcome were routinely submitted for audit, with non-conformance reports being raised by the Contractor where required. Restorative work ordinarily made the type of substitution of material or a concession asked for in light of designing judgment. To guarantee that the extraordinary levels of popularity to the nature of the deals with a global airplane terminal had been met, a Quality Management Plan and an assigned Supervision Team were likewise settled for the Resurfacing Project by the Airport Authority. Specific consideration was attracted to the testing and control on the creation and treatment of the Polymer Modified Bitumen. These included temperature control of the hot bitumen stockpiling, blending temperature of the black-top, the conveyance and laying temperature of the black-top <sup>[15]</sup>.

### Concluding Remarks

a. Use of Polymer Modified Asphalt is required to enhance the asphalt execution including its protection from twisting and weariness harms.

- b. Use of Polymer Modified bond coat had enhanced the holding between the new and old black-top surface.
- c. Thorough arranging, assessing every single operational requirement, is basic for a noteworthy runway reemerging venture.
- d. "Partnering" connection between all partners of the Project is a basic factor for the task achievement.
- e. Special quality control on the generation and treatment of the Polymer Modified Bitumen and laying of the Polymer Modified Asphalt is required to guarantee its consistency and consistence with detail.
- f. Modernized types of gear should be conveyed for the major reemerging Work to upgrade the effectiveness and to accomplish the quality standard.
- g. Special care ought to be attracted to the area and slope of transitory inclines required amid the reemerging works.
- h. Aircraft take-off/landing PC reenactment programming is ended up being a successful device for the outline/investigation

### References

1. Pavement Condition Survey Index (PCI) Field Manuals for Asphalt Surfaced Airfield, American Public Works Association
2. Pavement Technology Advisory –Non Destructive Testing with the Falling Weight Deflectometer Illinois Department of Transportation
3. Kenneth Maser, Ivar Sande. Application of Ground Penetrating Radar for Evaluation of Sub-Surface Airfield Pavement Condition in Denmark 1999 FAA Technology Transfer Conference
4. Leung Li, Pickle. Heaving of Airfield Pavement at Hong Kong International Airport, 2007 FAA Worldwide Airport Technology Transfer Conference.
5. Performance Graded Asphalt Binder, American Association of State Highways and Transportation Officials (AASHTO) Designation: MP320-03.
6. Ellis C, Widyatmoko I, Read JM. The Storage Stability and Behaviour of Polymer Modified Bituminous Binders, Second European Symposium on the Performance and Durability of Bituminous Materials, Leeds, 1997.
7. British Standard Institution. Bitumen and bituminous binders - Framework specification for polymer modified bitumen, BS EN 14023; Bituminous mixtures – Test methods for hot mix asphalt, BS EN 12697 series; Bituminous mixtures – Materials specification. Part 1: Asphalt Concrete, BS EN 13108-1.
8. Standard method of test for resistance of compacted asphalt mixtures to moisture-induced damage, American Association of State Highways and Transportation Officials (AASHTO) Designation: T 283-03.
9. Navpreet Singh Tung, Amit Bhardwaj, Tarun Mittal, Vijay Shukla, Dynamics of IGBT based PWM Converter a Case Study, International Journal of Engineering Science and Technology (IJEST), ISSN: 0975-5462, 2012.
10. Garadi M, Garadi T. Aircraft Ride Quality Assessment of a New Pavement 1999 FAA Technology Transfer Conference.
11. Aircraft characteristics, Airport and maintenance planning. Airbus, A380.
12. Interim aerodrome requirements for the A380, Aeronautical Services Unit, Civil Aviation Authority of

New Zealand.

13. Navpreet Singh Tung, Amit Bhardwaj, Ashutosh Bhadoria, Kiranpreet Kaur, Simmi Bhaduria. Dynamic programming model based on cost minimization algorithms for thermal generating units, International Journal of Enhanced Research in Science Technology & Engineering. 2012, 1(3). ISSN: 2319-7463.
14. Multiple-gear analysis for flexible pavement design in LEDFAA, David r. Brill and Gordon F. Hayhoe, FAA airport technology R&D branch, William j. Hughes technical centre, Atlantic city international airport, NJ, USA.
15. Unified Facilities Criteria (UFC), Pavement design for airfields.
16. Sustainable Airport Planning, Design and Construction Guidelines for Implementation on All Airport Projects, Version 5.0 • February 2010, LA World Airports.
17. Design guide for airport pavements, National Crushed Stone Association.
18. Kamboj VK, Bhardwaj A, Bhullar HS, Arora K, Kaur K. Mathematical model of reliability assessment for generation system, Power Engineering and Optimization Conference (PEDCO) Melaka, Malaysia, IEEE, 2012.